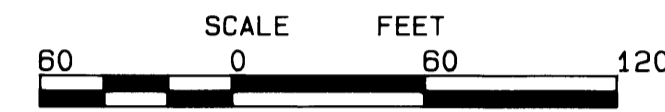
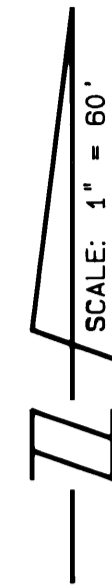


PLAT NO. 35

BEING A PORTION OF PARCEL NO. 29
MARTIN DOWNS P.U.D.

BEING A PORTION OF GOVERNMENT LOT 1
SECTION 7, TWP. 38 S., RNGE. 41 E.,
AND

BEING A PORTION OF GOVERNMENT LOT 3
SECTION 8, TWP. 38 S., RNGE. 41 E.,
MARTIN COUNTY, FLORIDA



MARCH, 1988

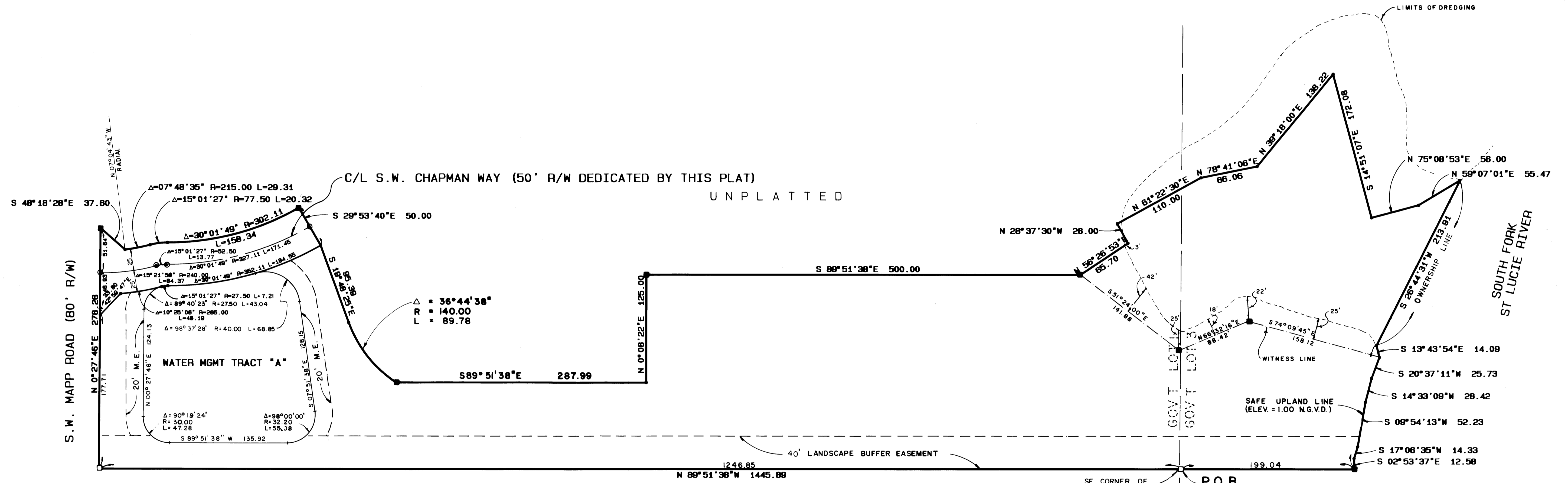
I, MARSHA STILLER, CLERK OF THE CIRCUIT COURT OF MARTIN COUNTY, FLORIDA, HEREBY CERTIFY THAT THIS PLAT WAS FILED FOR RECORD IN PLAT BOOK 11, PAGE 35, MARTIN COUNTY, FLORIDA, PUBLIC RECORDS, THIS DAY OF 1988.

MARSHA STILLER, CLERK CIRCUIT COURT MARTIN COUNTY, FLORIDA.

BY DEPUTY CLERK

FILE NO.

(CIRCUIT COURT SEAL)



- LEGEND:
- - DENOTES P.R.M. (PERMANENT REFERENCE MONUMENT) FOUND (NO NUMBER)
 - - DENOTES P.R.M. (PERMANENT REFERENCE MONUMENT) SET
 - ⊙ - DENOTES P.C.P. (PERMANENT CONTROL POINT)
 - M.E. - DENOTES MAINTENANCE EASEMENT

PELICAN COVE
P.B. 2, PG. 96
MARTIN COUNTY, FLORIDA

BEARING BASE:
THE NORTH LINE OF PELICAN COVE S/D IS TAKEN TO BE
N 89°51'38"W, AND ALL BEARINGS SHOWN HEREON ARE
RELATIVE THERETO.

LINDAHL BROWNING FERRARI & HELLSTROM, INC. CONSULTING ENGINEERS, PLANNERS & SURVEYORS	
PO BOX 27 JUPITER, FLORIDA 33466	36 CENTRAL PARKWAY SUITE 400 STUART, FLORIDA 34997
1905 SOUTH 25TH STREET SUITE 200 FORT PIERCE, FLORIDA 34966	

2 2